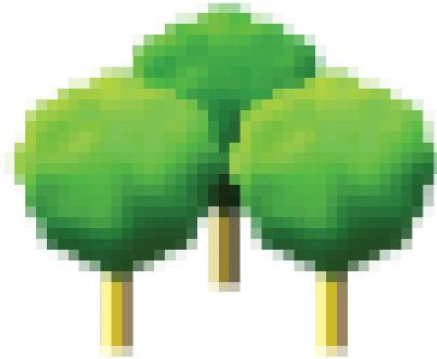


# Stokes Wood Primary School



**Stokes Wood**  
Primary School

*What we do today, matters tomorrow.*

## **Low-Level Concerns Policy 2024-2025**

Safeguarding is defined as protecting children from maltreatment, preventing impairment of health and/or development, ensuring that children grow up in the provision of safe and effective care and taking action to enable all children to have the best life chances.

<b>Policy Date:</b>	August 2024	Version	1.4	
<b>Policy Review Date:</b>	August 2025	Jane Gadsby	Signature	Date
<b>Ratified by Governing Body:</b>	NAME		Signature	Date

## Contents Page

<b>Item</b>	<b>Page No.</b>
Statement of Intent	2
1.Legal Framework	2
2.Definitions	3
3.Roles and Responsibilities	4
4.Prevention Amongst Staff	5
5.Reporting Concerns	6
6.Self Reporting	7
7. Organisation or individuals using school premises	7
8.Evaluation Concerns	7
9.Acting on Concerns	8
10.Record Keeping	9
11.Monitoring and Review	10
<b>Appendices</b>	
1. Process to follow when reporting a Low-Level Concern	11
2. Low Level Concern Reporting Form	12

## Statement of intent

Stokes Wood Primary School understands the importance of acknowledging, recording and reporting **all** safeguarding concerns, regardless of their perceived severity. We understand that, while a concern may be low-level, that concern can escalate over time to become much more serious.

Our school prides itself on creating a safe and prosperous environment for pupils, and our staff are expected to adhere to high standards of behaviour when it comes to professional conduct regarding pupils. The school has clear professional boundaries which all staff are made aware of and will adhere to. We are committed to ensuring that any safeguarding concerns are dealt with as soon as they arise and before they have had a chance to become more severe, to minimise the risk of harm posed to our pupils and other children.

It may be possible that a member of staff acts in a way that does not cause risk to children but is however inappropriate. A member of staff who has a concern about another member of staff should inform the Headteacher about their concern using a Low-Level Record of Concern Form which are kept in the staff room on the safeguarding board. If the Headteacher cannot be contacted, staff can approach a member of the senior leadership team (SLT) or contact the Chair of Governors – Nels Makwana via email ([nels50@sky.com](mailto:nels50@sky.com)).

Stokes Wood Primary School will achieve the purpose of our low-level concerns policy by:

- Ensuring their staff are clear about what appropriate behaviour is, and are confident in distinguishing expected and appropriate behaviour from inappropriate, problematic or concerning behaviour, in themselves and others
- Empowering staff to share any low-level safeguarding concerns
- Addressing unprofessional behaviour and supporting the individual to correct it at an early stage
- Handling and responding to such concerns sensitively and proportionately when they are raised
- Helping identify any weakness in the school's safeguarding system.

## 1. Legal Framework

This policy has due regard to all relevant legislation and statutory guidance including, but not limited to, the following:

- [UK General Data Protection Regulation \(UK GDPR\)](#)
- [Data Protection Act 2018](#)
- [DfE \(2023\) 'Keeping children safe in education'](#)
- [DfE \(2023\) 'Working Together to Safeguard Children'](#)

**The following is taken from Keeping Children Safe in Education September 2024:**

As part of their whole school or college approach to safeguarding, schools and colleges should ensure that they promote an open and transparent culture in which all concerns about all adults working in or on behalf of the school or college (including supply teachers, volunteers and contractors) are dealt with promptly and appropriately.

Creating a culture in which all concerns about adults are shared responsibly and with the right person, recorded and dealt with appropriately, is critical. If implemented correctly, this should:

- Enable schools to identify inappropriate, problematic or concerning behaviour early
- Minimise the risk of abuse
- Ensure that adults working in or on behalf of the school are clear about professional boundaries
- Act within these boundaries, and in accordance with the ethos and values of the institution.

This policy operates in conjunction with the following school policies:

- Child Protection and Safeguarding Policy
- Staff Code of Conduct
- Positive Handling Policy
- Allegations of Abuse Against Staff Policy
- Whistleblowing Policy
- Data Protection Policy
- Screening, Searching and Confiscating Policy

All of these policies can be found on our school [website](#).

## 2. Definitions

For the purposes of this policy, a **low-level concern** is defined as any concern about an adult's behaviour towards, or concerning, a child that does not meet the harms threshold (see below) or is otherwise not serious enough to consider a referral at the time of its reporting. Low-level concerns refer to behaviour on the part of a staff member towards pupils that is considered inappropriate in line with statutory safeguarding advice, the Staff Code of Conduct, and the appropriate and inappropriate behaviour subsection of this policy.

The term 'low-level' concern does not mean that it is insignificant. A low-level concern is any concern – no matter how small, and even if no more than causing a sense of unease or a 'nagging doubt' - that an adult working in or on behalf of the school or college may have acted in a way that:

- is inconsistent with the staff code of conduct, including inappropriate conduct outside of work and
- does not meet the harm threshold or is otherwise not serious enough to consider a referral to the LADO.

Low-level concerns are differentiated from concerns that can cause **harm**. The harms threshold is the point at which a concern is no longer low-level and constitutes a threat of harm to a child. This threshold is defined as accusations that an adult has:

- Behaved in a way that has harmed a child or may have harmed a child.
- Possibly committed a criminal offence against, or related to, a child.
- Behaved towards a child in a way that indicates they may pose a risk of harm to children.
- Behaved in a way that indicates they may not be suitable to work with children, including behaviour that has happened outside of school.

While low-level concerns are, by their nature, less serious than concerns which meet the harms threshold, the school understands that many serious safeguarding concerns, e.g., child sexual abuse, often begin with low-level concerns, e.g., being overly friendly with children. The school will ensure that all staff are aware of the importance of recognising concerns before they escalate from low-level to serious, wherever possible.

### **3. Roles and Responsibilities**

#### **The governing board is responsible for:**

- Ensuring that the school complies with its duties under child protection and safeguarding legislation.
- Ensuring that policies, procedures and training opportunities with regard to reporting safeguarding concerns are compliant and effective.
- Guaranteeing that there is an effective Staff Code of Conduct that outlines behavioural expectations.
- Ensuring that a suitably trained DSL has been appointed, alongside deputy DSLs where appropriate.
- Ensuring that there are robust reporting arrangements, including inter-agency collaboration.
- Ensuring that there are appropriate procedures in place to handle allegations and low-level concerns reported against members of staff.

#### **The headteacher is responsible for:**

- Being a point of contact for all staff when they have safeguarding concerns, whether serious or low-level.
- Assessing whether safeguarding concerns about staff members meet the threshold for being termed an allegation, or whether they are low-level concerns.
- Implementing this policy, and all related policies, throughout the school, and ensuring that staff adhere to it at all times.
- Safeguarding pupils' wellbeing and maintaining public trust in the teaching profession.
- Ensuring that all staff have undertaken safeguarding training.
- Ensuring that all staff have an ongoing awareness of low-level concerns and reporting procedures.

#### **The DSL is responsible for:**

- Being a point of contact for all staff when they have safeguarding concerns, whether serious or low-level.
- Assessing whether safeguarding concerns about staff members meet the threshold for being termed an allegation, or whether they are low-level concerns.
- Following all procedures outlined in this policy for acting upon low-level concerns.
- Liaising with the headteacher, staff members, the governing body and all relevant agencies to act upon concerns, where necessary.
- Keeping detailed, accurate and secure records of all low-level concerns and any actions taken.

#### **Our staff are responsible for:**

- Adhering to all the relevant policies and procedures, including acting within the Staff Code of Conduct at all times.
- Interacting with pupils in a way that is respectful and appropriate for their level of authority and has due regard to the power imbalance between pupils and staff members.
- Understanding the importance of reporting low-level safeguarding concerns.
- Reporting any and all safeguarding concerns they may have about pupils immediately.
- Reporting any and all safeguarding concerns they may have about the behaviour of a member of staff (including a member of supply staff, contractor or volunteer) immediately.

## 4. Prevention Amongst Staff

### Appropriate and inappropriate behaviour

The school will ensure that all staff members are aware of the standards of appropriate behaviour expected towards pupils.

Staff will ensure that they pay due regard to the fact that:

- They are in a unique position of trust, care, responsibility, authority and influence in relation to pupils.
- There is a significant power imbalance in the pupil-staff dynamic.
- There are more stringent expectations on their behaviour with regard to pupils due to their position as a public professional.

Staff will remain aware of the fact that all pupils under the age of 18, regardless of the phase and year group they are at within the school, are children by law – resultantly, staff will ensure that they do not assume maturity on behalf of a pupil and do not engage with pupils as they would with their own peers. Staff will be aware that where there is any doubt regarding whether the behaviour of another adult is appropriate, this should be reported to the Headteacher immediately.

Inappropriate behaviour can exist on a wide spectrum, from inadvertent or thoughtless behaviour to behaviour which is ultimately intended to enable abuse. Examples of inappropriate behaviour (not exhaustive) that would constitute a low-level concern that should be reported to the Headteacher include:

- **Being overly friendly with children** – this could include, but is not limited to, communicating with a child through personal social media or allowing inappropriate conversations or enquiries to occur with pupils, e.g. conversations that are about a staff member's personal life or are of a sexual nature.
- **Having favourites** – this could include, but is not limited to, calling pupils by pet names or terms of endearment or buying pupils gifts.
- **Taking photographs of children on their personal mobile phones or devices**
- **Engaging with a child on a one-to-one basis in a secluded area or behind a closed door.**
- **Using inappropriate, sexualised, intimidating or offensive language.**

Staff will be aware that some of the above low-level concerns may meet the harms threshold depending on certain factors, e.g. the age or needs of the child or the content of exchanged messages, and that some of the above incidents may not be concerns in context, e.g. a pre-approved, one-to-one meeting with a child behind a closed door between the child and a school counsellor who has received all appropriate safety checks.

Staff will also be made aware that behaviour which raises concerns may not be intentionally inappropriate, and that this does not negate the need to report the behaviour. Staff members who engage in low-level inappropriate behaviour in relation to pupils inadvertently will be made aware and supported to correct this behaviour in line with the Staff Code of Conduct. The headteacher will also evaluate whether additional training would be beneficial for any staff members exhibiting concerning behaviour, or the staff cohort as a whole where low-level concerning behaviour is seen more widely.

### School culture

The school understands that spotting the early signs of harmful behaviour towards children can be difficult, and that many will be hesitant to report concerns they have about their colleagues' behaviour, particularly the behaviour of

their superiors. Staff are encouraged to maintain an attitude that recognises that abuse can happen anywhere, in any setting, and that anyone can be a perpetrator regardless of their age, sex, level of authority, personality, etc.

The school will ensure that all staff members have received training as part of their induction that outlines appropriate behaviour towards pupils for staff members. All staff will read, understand, and adhere to the appropriate and inappropriate behaviour subsection of this policy, as well as the Staff Code of Conduct.

Staff will address any questions they have regarding safeguarding to the DSL. The school will work to foster an environment where personal and professional boundaries are clearly set and respected for all individuals in the school community, e.g. pupils are not treated as friends and an appropriate professional distance is maintained by staff.

The school will ensure that all staff are sufficiently trained surrounding the reporting of safeguarding concerns as part of their induction, and that refresher training is conducted as necessary. The school will ensure that all staff understand how to recognise and report safeguarding concerns. Staff will be trained to identify concerning or problematic behaviour towards pupils that may indicate a safeguarding concern, and how to identify signs of abuse or harm in pupils.

### **Evaluating school culture following concerns**

The school will ensure that appropriate consideration is given to the school's culture and whether or not it has enabled the inappropriate behaviour to occur. The headteacher along with governors will review whether any changes need to be made to relevant policies or training programmes in light of any evaluations of the school's culture, in order to achieve an open and transparent culture that deals with all concerns promptly and appropriately.

## **5. Reporting Concerns**

The school will promote a culture in which safeguarding pupils is the uppermost priority, beyond any perceived professional loyalties to colleagues, ensuring that staff are actively encouraged to report concerns, regardless of their relationship with the staff member. Staff will report all safeguarding concerns they have to the headteacher immediately in line with the procedures laid out in the Child Protection and Safeguarding Policy. Staff members will report concerns without undue delay. Staff members will be aware that concerns are still worth reporting even if they do not seem serious.

Staff members will report their concerns to the Headteacher or SLT member verbally, or by submitting a Low-level Concern Reporting Form (these can be found in the staff room on the safeguarding board). When submitting concerns, staff will take care to ensure that they observe the Confidentiality Policy and the Allegations of Abuse Against Staff Policy and protect the identity of all individuals to which the concern pertains as far as possible.

Staff members may request anonymity when reporting a concern, and the school will endeavour to respect this as far as possible. The school will not, however, promise anonymity to staff members who report concerns in case the situation arises where they must be named, e.g. where it is necessary for a fair disciplinary hearing. In line with the Whistleblowing Policy, staff will be protected from potential repercussions caused by reporting a genuine concern.

Where a low-level concern relates to the headteacher, it should be reported to the chair of governors.

Where a low-level concern relates to a person employed by a supply agency or a contractor to work in the school, staff will also be required to report this to the headteacher, who will, in turn, inform the employer of the subject of the concern. All concerns reported to the headteacher will be documented in line with Keeping Children Safe in Education 2024.

## **6. Self-Reporting**

On occasion, a member of staff may feel as though they have acted in a way that:

- Could be misinterpreted.
- Could appear compromising to others.
- They realise, upon reflection, falls below the standards set out in the Staff Code of Conduct.

The school will ensure that an environment is maintained that encourages staff members to self-report if they feel as though they have acted inappropriately or in a way that could be construed as inappropriate upon reflection. The headteacher, SLT and DSL(s) will, to the best of their abilities, maintain a culture of approachability for staff members, and will be understanding and sensitive towards those who self-report.

Staff members who self-report will not be treated more favourably during any resulting investigations than staff members who were reported by someone else; however, their self-awareness and intentions will be taken into consideration.

## **7. Organisations or individuals using school premises**

Stokes Wood Primary School may receive an allegation relating to an incident that happened when an individual or organisation was using our premises for the purposes of running activities for children (for example community groups, sports associations, or service providers that run extra-curricular activities). As with any safeguarding allegation, where this is the case, we will follow our safeguarding policies and procedures, including informing the LADO.

## **8. Evaluating Concerns**

Where the headteacher is notified of a safeguarding concern, they will use their professional judgement to determine if the concern is low-level or if it must be immediately escalated, e.g. where a child is at immediate risk of harm. When deciding if a concern is low-level, the headteacher will discuss the concern with the DSL and the deputy headteacher and will seek advice from the Local Area Designated Officer (LADO) where there is any doubt about how seriously to take the concern. When seeking external advice, the headteacher will ensure they adhere to the Data Protection Policy, and the information sharing principles outlined in the Child Protection and Safeguarding Policy, at all times.

To evaluate a concern, the headteacher, SLT and or DSL will:

- Speak to the individual who raised the concern to determine the facts and obtain any relevant additional information.
- Review the information and determine whether the behaviour displayed by the individual about whom the concern was reported is consistent with the Staff Code of Conduct and the law.
- Determine whether the concern, when considered alongside any other low-level concerns previously made about the same individual, should be reclassified as an allegation and dealt with alongside the Allegations of Abuse Against Staff Policy.
- Consult with, and seek advice from the LADO
- Speak to the individual about whom the concern has been raised to inform them of the concern and to give them an opportunity to respond to it.
- Ensure that accurate and detailed records are kept of all internal and external conversations regarding evaluating the concern, and any actions or decisions taken.



## 9. Acting on Concerns

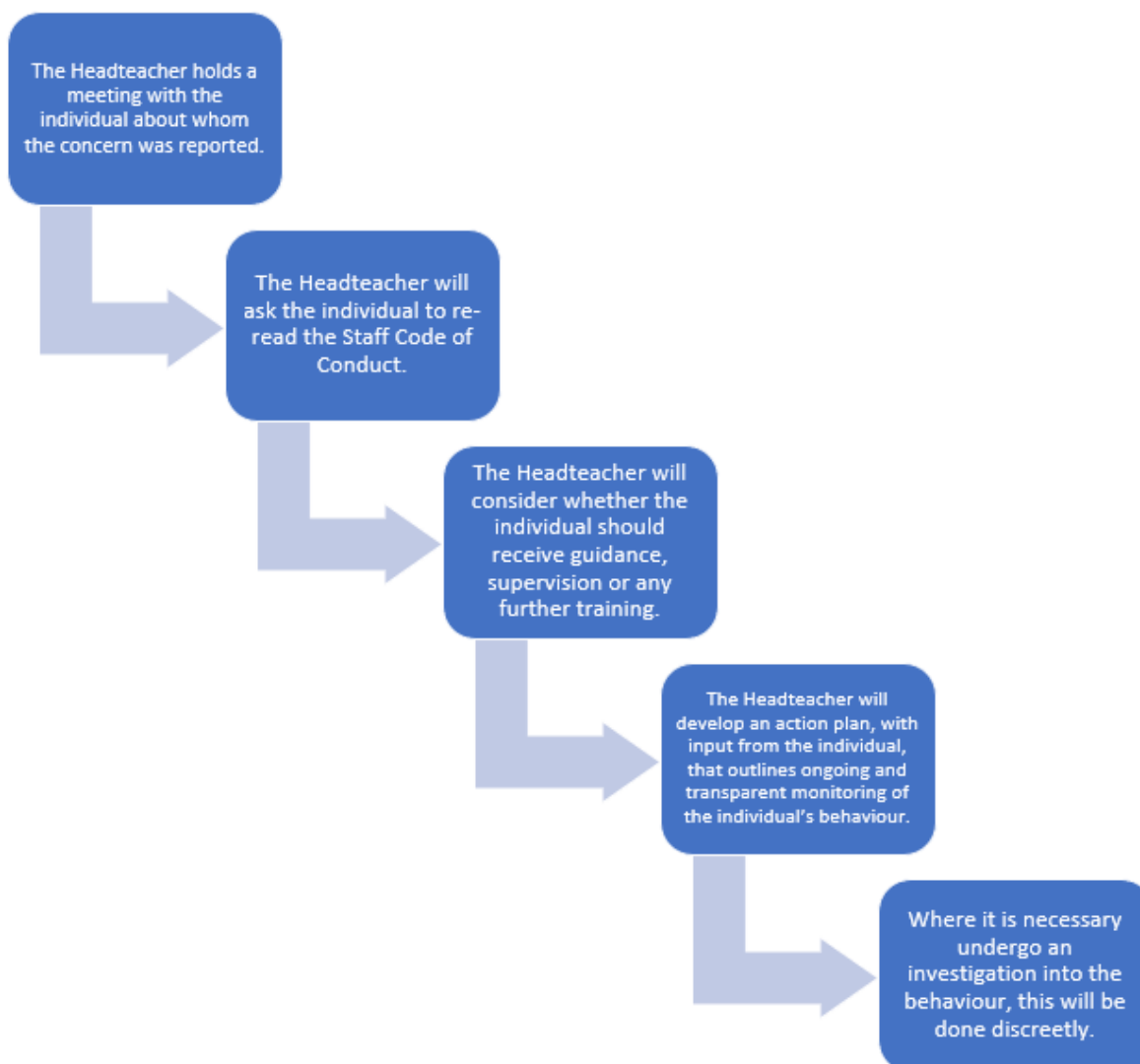
### Where the concern is unfounded

If it is discovered upon evaluation that the low-level concern refers to behaviour that was not considered to be in breach of the Staff Code of Conduct, the headteacher will speak to the individual about whom the concern was made to discuss their behaviour, why and how the behaviour may have been misconstrued, and what they can do to avoid such misunderstandings in the future. The headteacher will also speak to the individual who shared the concern, outlining why the behaviour reported is consistent with school standards and the law. The headteacher will take care to ensure that conversations with individuals who reported concerns that transpired to be unfounded do not deter that individual from reporting concerns in the future.

The headteacher will discuss the concern with the SLT/DSL to discern whether the behaviour, and the reporting of this behaviour, is indicative of ambiguity in the school's policies or procedures, or the training it offers to staff. Where such ambiguity is found, the DSL and headteacher will work together to resolve this with input from other staff members, as necessary.

### Where the concern is low-level

Where the headteacher determines that a concern is low-level, the school will respond to this in a sensitive and proportionate manner. The following procedure will be followed:



At all times the Headteacher will:

- Talk to the individual in a non-accusatory and sympathetic manner.
- Inform them of how their behaviour was perceived by the individual who reported the concern (without naming them, where possible).
- Clearly state what about their behaviour was inappropriate and problematic.
- Discuss the reasons for the behaviour with the individual.
- Inform the individual clearly what about their behaviour needs to change.
- Discuss any support that the individual may require in order to achieve the proper standards of behaviour.
- Allow the individual the opportunity to respond to the concern in their own words.

Where any pupil or other individual has been made to feel uncomfortable by the individual's behaviour, they will be offered pastoral support, where appropriate.

The headteacher will ensure that all details of the low-level concern, including any resultant actions taken, are recorded, and securely stored in line with the Records Management Policy and the Data Protection Policy. The headteacher will ensure that these records are kept organised and up-to-date, and that it is easy to refer to them if any other concerns are reported about the same individual.

The specific approach to handling low-level concerns will be adapted on a case-by-case basis. It is unlikely that a low-level concern will result in disciplinary procedures; however, individuals may be given warnings in line with the Disciplinary Policy and Procedure where behaviour does not improve once it is brought to their attention. Where behaviour does not improve over a longer period, the concerns will be escalated and dealt with in line with the Allegations of Abuse Against Staff Policy.

#### **Where the concern is serious**

The headteacher may decide upon evaluation that a concern is more serious than the reporter originally thought, e.g. when viewed in conjunction with other evidence or other concerns made about the same individual. Where this decision is made, the concern will be escalated, and dealt with as an allegation. The headteacher will then follow the procedures laid out in the Allegations of Abuse Against Staff Policy.

## **10. Record keeping**

The school will retain all records of low-level concerns, including those that were found to be unfounded. The headteacher will ensure that all records include the most accurate and up-to-date information and will store them in the safeguarding secure file on teams. The headteacher will ensure that all low-level concerns are stored together, in an organised and consistent manner, to ensure they can be easily reviewed and analysed where necessary.

Records will include:

- A clear and comprehensive summary of the concern.
- Details of how the concern was followed up and resolved.
- A note of any action taken, decisions reached, and the outcome.
- The name of the individual sharing concerns – if the individual wishes to remain anonymous, this will be respected as far as reasonably possible.

The headteacher will periodically review the recent low-level concerns made to ensure that they are being appropriately dealt with and to check for any concerning behaviour patterns amongst the staff cohort as a whole. The headteacher will keep records of these reviews.

Where any concerning patterns of behaviour have been identified with regard to a member of staff, the headteacher to decide on a course of action. Where a pattern of behaviour has become so concerning that it meets the harms threshold, this will be referred to the LADO as soon as practicable.

Records of low-level concerns will not be kept in the personnel file of the individuals to whom the concerns pertain, unless there have been multiple low-level concerns made about the same individual.

Where a concern is thought to be serious and is processed as an allegation, records of this will be kept in staff personnel files. Where multiple low-level concerns have been made about the same individual, these will be kept together, and in chronological order.

Where an allegation is made about an individual who has previously been subject to such allegations, or where a low-level concern is reclassified as a serious concern after meeting the harms threshold, all records of low-level concerns about that individual will be moved to the staff personnel file and kept alongside records of the allegation.

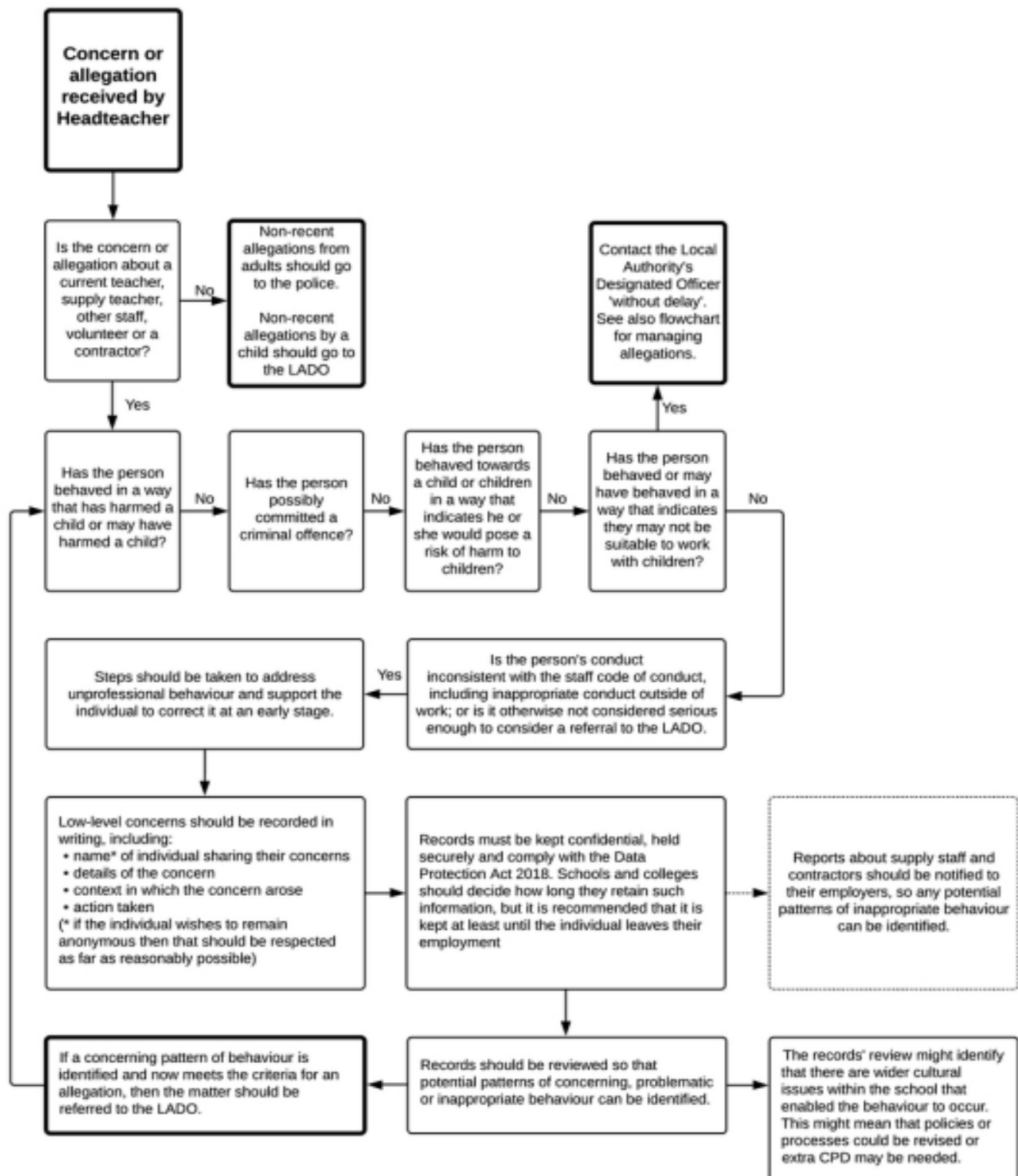
The headteacher will ensure that all records are kept in a manner that is consistent with the Data Protection Policy. Records will be kept confidential and securely destroyed after the staff member to whom the concerns pertain has left the school.

The school will only refer to concerns about a staff member in employment references where they have amounted to a substantiated safeguarding allegation, i.e. it has met the harms threshold and has been found to have basis through investigation, or where it is not exclusively a safeguarding issue and forms part of an issue that would normally be included in a reference, e.g. misconduct or poor performance. Low-level safeguarding concerns will not be included in a reference, unless they have comprised a pattern of behaviour that has met the harms threshold.

## **11. Monitoring and Review**

This policy will be reviewed annually by the headteacher and DSL, and in response to any new safeguarding requirements or concerns surrounding the wider cultural issues in the school. the next scheduled review date for this policy is August 2025.

## Appendix 1: Process to follow when reporting a Low-Level Concern



## Appendix 2 - Low-level Concern Reporting Form

Please use this form to share any concern – no matter how small, and even if no more than a ‘nagging doubt’ – that an adult may have acted in a manner which:

- is not consistent with the Stokes Wood Code of Conduct, and/or;
- relates to their conduct outside of work which, even if not linked to a particular act or omission, has caused a sense of unease about that adult’s suitability to work with children.

Where possible please speak with the Headteacher as soon as possible. It is also helpful to document your concerns, which can be done using this form and then passed to the Head Teacher. When completed, please pass this form to the Headteacher. If the concern is about the Headteacher, please pass it onto the Chair of Governors or email them. Remember, a low-level concern is different to an allegation (which uses a different form). See the table below for a definition:

### **Allegation**

Behaviour which indicates that an adult who works with children has:

- Behaved in a way that has harmed a child or may have harmed a child.
- Possibly committed a criminal offence against, or related to, a child.
- Behaved towards a child in a way that indicates they may pose a risk of harm to children.
- Behaved in a way that indicates they may not be suitable to work with children, including behaviour that has happened outside of school.

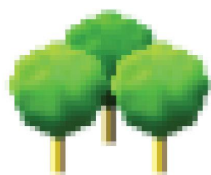
### **Low-Level Concern**

Any concern – no matter how small, even if no more than a ‘nagging doubt’ – that an adult may have acted in a manner which:

- Is not consistent with the school’s Code of Conduct
- Relates to their conduct outside of work which, even if not linked to a particular act or omission, has caused sense of unease about the adult’s suitability to work with children.

### **Appropriate Conduct**

Behaviour which is entirely consistent with the organisation’s Code of Conduct, and the law.



**Stokes Wood**  
Primary School

## Low-level Concern Reporting Form

<b>Your details</b>	
Name (optional)	
Role	
Date and Time of completing this form	
<b>Details of individual whom the concern is about</b>	
Name	
Role	
Relationship to the individual reporting the concern, e.g. manager, colleague	
<b>Details of concern</b>	
<b>Please include as much detail as possible. Think about the following:</b> What behaviour and/or incident are you reporting? What exactly happened? Why does the behaviour and/or incident worry you? Why do you believe the behaviour and/or incident is not consistent with our Staff Code of Conduct?	
<b>Details of any children or young people involved</b>	
Name(s)	
Do you believe there is a risk of harm to the above children or young people, either now or in the future, as a result of the individual's behaviour? Explain your answer.	

<b>Next steps</b>	
What would you like to see happen in response to your concern?	
Are you willing to meet with the headteacher and DSL to discuss your concern? Please circle as appropriate.	Yes <input type="checkbox"/> No <input type="checkbox"/>
Please state any other information that you believe is relevant to the processing of this concern.	
Signature	
<b>For use by safeguarding team upon receipt of concern</b>	
Date and time concern received	
Signature of DSL or deputy DSL	
Actions to be taken, e.g. no action, investigation, reclassification as allegation meeting the harms threshold	